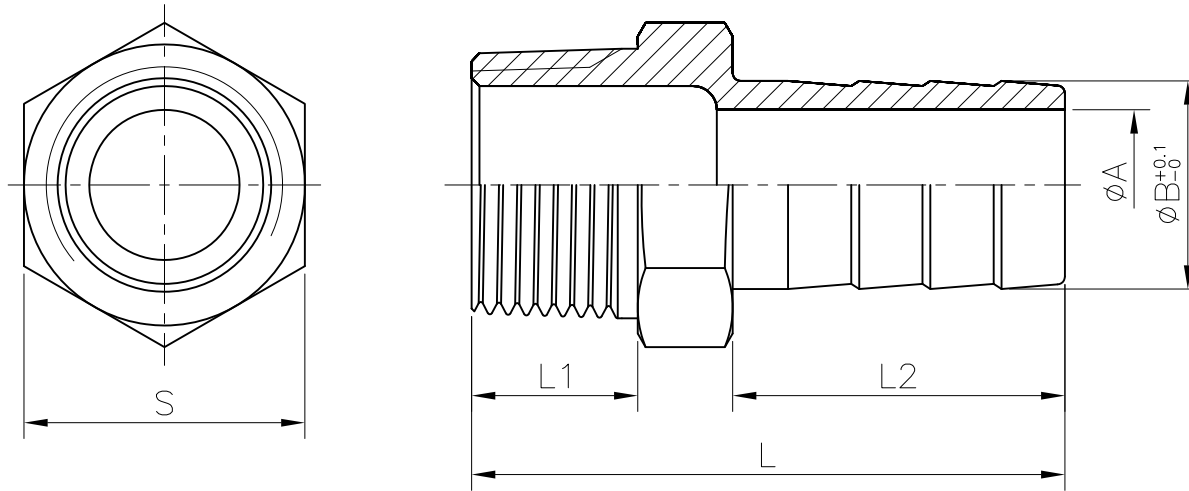


HOSE NIPPLE



0.1	▽	0.1
0.02	▽	0.2
0.03	▽	1.6
0.05	▽	6.3
0.08	▽	25
0.1	▽	0.1
0.02	▽	0.2
0.03	▽	0.3
0.05	▽	0.5
0.08	▽	0.8
0.5~5	▽	0.1
6~30	▽	0.2
31~120	▽	0.3
121~320	▽	0.5
321~1000	▽	0.8
GENERAL TOLERANCE		

HAITIMA CORPORATION
 P.O.BOX 34-36 TAIPEI
 Tel:+886-2-26585800
 E-mail:haitima@seed.net.tw
 TAIWAN R.O.C. www.haitima.com.tw
 Fax:+886-2-26582266

SIZE	1/8"		1/4"		3/8"		1/2"		3/4"		1"		1-1/4"		1-1/2"		2"		2-1/2"		3"		4"	
	mm	in	mm	in	mm	in	mm	in	mm	in	mm	in	mm	in	mm	in	mm	in	mm	in	mm	in	mm	in
A	3	0.12	4	0.16	5	0.2	7	0.28	15	0.59	19.5	0.77	26.5	1.04	33.5	1.32	44	1.73	54	2.13	68	2.68	91	3.58
B	6	0.24	8	0.31	10	0.39	13	0.51	20	0.79	25	0.98	32	1.26	40	1.57	51.5	2.03	63.5	2.5	76.5	3.01	102	4.02
L1	10	0.39	11.5	0.45	13	0.51	15	0.59	15.5	0.61	19	0.75	22	0.87	22	0.87	22.5	0.89	29.5	1.16	27	1.06	30.5	1.2
L2	19	0.75	25	0.98	29.5	1.16	33	1.3	34	1.34	39	1.54	37	1.46	47.5	1.87	53.5	2.11	65	2.56	68	2.68	74	2.91
L	34	1.34	43	1.69	49	1.93	56.5	2.22	60	2.36	69	2.72	70	2.76	80	3.15	88	3.46	108	4.23	110	4.33	120	4.72
S	12.5	0.49	15	0.59	19	0.75	23	0.91	28	1.1	37	1.46	45	1.77	50	1.97	62	2.44	79	3.11	91.5	3.6	117	4.61

Tolerance: ±0.5mm (1/8"~2")
 ±0.8mm (2-1/2"~4")

△			
△			
△			
Revise	Description	Date	Approve
DRAWING NO. F08		-10	



HAITIMA CORPORATION
 Ball Valves & Pipe Fittings

CHECK BY	DRAWING BY	DATE	SPECIFICATION	HOSE NIPPLE
	<i>Louis</i>	Oct.04.2010	MATERIAL	304/316
			PROCESS/Nr.	
			UNIT / SCALE	mm

